

A NEW MITE OF THE SUBFAMILY TYDEINAE (ACARI: ACTINEDIDA: TYDEIDAE) FROM EGYPT

BY F.M. MOMEN¹

(Accepted December 2004)

TYDEIDAE
NEW SPECIES
EGYPT

SUMMARY: A new tydeid mite belonging to the genus *Tydeus* Koch is illustrated and described as new to science. *T. tobhari* n.sp. was found on leaves and branches of grape-vines at Tobhar village, Faywam Governorate, Egypt.

RÉSUMÉ : Une nouvelle espèce du genre *Tydeus* Koch est décrite et illustrée: *T. tobhari* n.sp. des feuilles et branches sur vigne (Tobhar, Faywam Governorate, Egypte).

INTRODUCTION

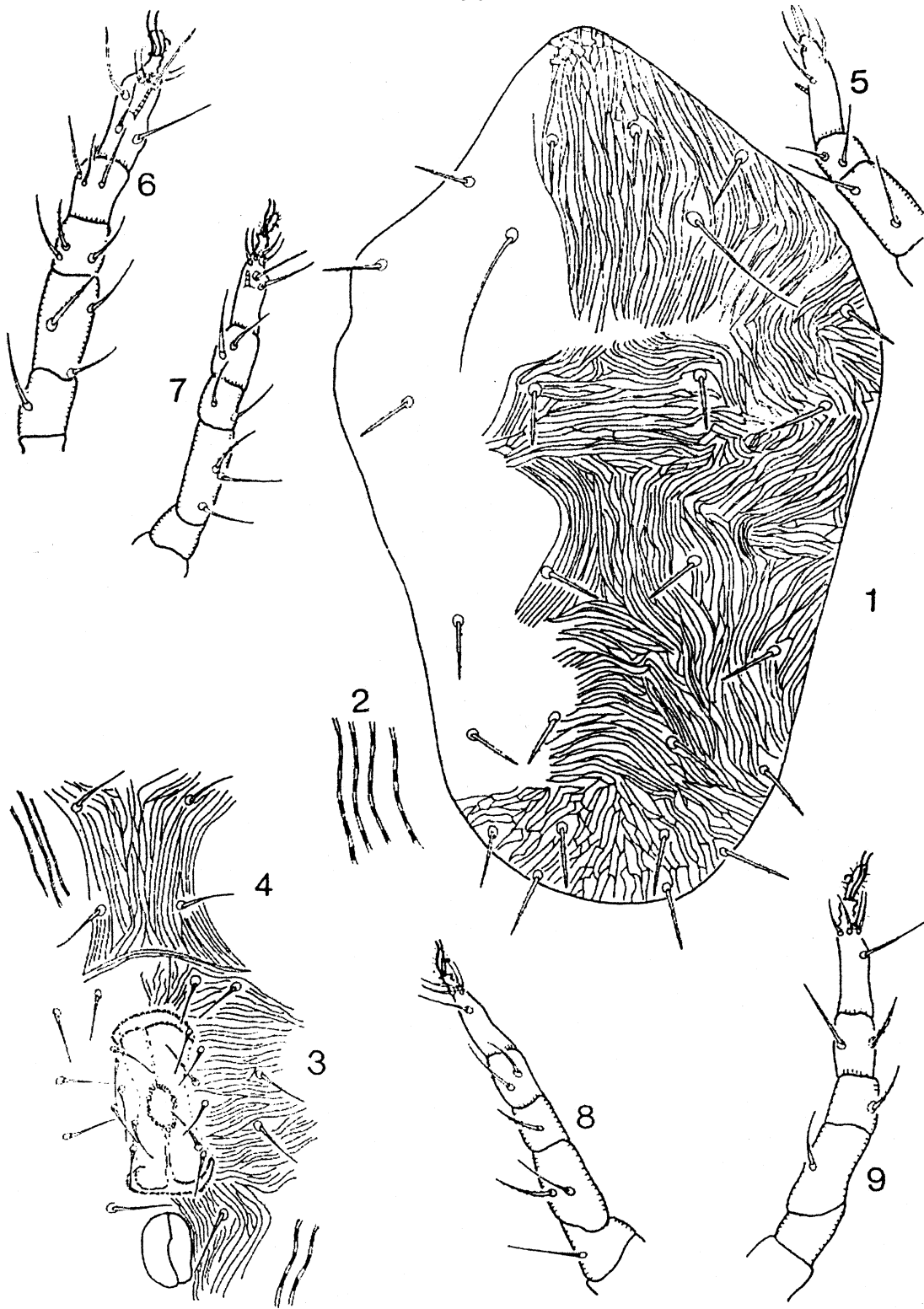
Tydeids are encountered in moss, litter, soil, bird's nests, on plant and in stored products (MARSHALL 1970; MOMEN, 1986&1990; MOMEN and SINHA, 1991; MOMEN and LUNDQVIST, 1995). During my survey of mites associated with vineyards and mango trees in Egypt, I have found several new species of the family Tydeidae. MOMEN and EL-BAGOURY, 1994 described a new species belonging to genus *Tydeus* Koch from the above mentioned habitat. Present paper is part of a continuing survey of tydeid mites inhabiting vineyards in Egypt. The terminology and generic concepts followed are those of ANDRÉ (1980, 1981a, b). Holotype and paratypes are deposited in the collection of the National Research Centre, Pests and Plant Protection Department, Egypt. All measurements are given as means based on 8 observations.

Genus *Tydeus* Koch, 1835, sensu André, 1980
Tydeus tobhari n. sp. (FIGS. 1-9)

ADULT FEMALE (FIG. 1). Dorsum 248-254 μ ; width 144-151 μ . A small reticulated area on the anterior part of the prodorsum and a larger reticulated area on posterior of idiosoma which contains setae d5, h2 and l5; rest of idiosoma striated. Striae vague with transverse lobes (FIG.2), striation type "*Paralorryia*" sensu Baker, meshes of reticulum longitudinally elongates on the posterior part of idiosoma. Dorsal setae strong, blunt distally and sparsely serrate except the trichobothrium which is sharp distally and smooth. Setal measurements: p1 and d3 subequal 16 μ , p2, p3, d1, l1 and d2 all subequal 14 μ , d4, d5 and l4 all subequal 15 μ , h2, l5 and ps all subequal 16 μ , s 38 μ .

Venter finely striated, striae between metasternal setae mt form relatively V shaped pattern (FIG. 4), with transverse lobes. Aggenital and genital setae setiform, anogenital area with six pairs of genital, four pairs of aggenital setae (FIG. 3).

1. National Research Centre, Pests & Plant Protection Department, Dokki, Cairo, Egypt. E.mai: fatmomen@yahoo.com.



FIGS.1-9. *Tydeus tobhari* n.sp. (Female): 1. — Dorsum. 2. — Lobe of striation. 3. — Genital and anal region. 4. — Venter striation between setae mt. 5. — Palp. 6. — Leg1. 7. — Leg2. 8. — Leg3. 9. — Leg4.

All legs terminate in two claws and a hairy empodium with a well developed claw (FIGS. 6-9). Solenidion on tarsus I long and slender (7 μ), solenidion on tarsus II short (4 μ), seta k on tibia I short and divided (FIGS. 6-7).

Setal pattern of palpus: 6(1)-2-2; terminal eupathidium thick and rounded distally, seta d simple, and seta ba slender, short (FIG. 5); palpal tarsus (17 μ), 1.5 longer than moveable chelae (11 μ).

MALE : unknown

TYPE DATA. Holotype, female, slide no. 220, 7 females paratypes: Tobhar; ex leaves and branches of grape-vine, leg. MOMEN.

ETYMOLOGY. The species name is derived from the type locality.

REMARKS. I observed inconsistency (asymmetry) in the number of genital setae in two of the 8 females (6 setae on one side, 7 on the other side of the body). Similar differences have been reported by (KAZMIERSKI 1989) in *Lorryia inconstans* Kazmierski 1989 and (MOMEN and EL-BAGOURY 1994) in *Tydeus katti* Momen and El-bagoury 1994.

DIAGNOSIS: *Tydeus tobhari* n.sp. is similar to *Paralorryia fibra* Kuznetzov 1975 described from the Crimea and *Tydeus parafibra* Momen 1988 from Ireland. All similar species have two large reticulate areas, one at the tip of the prodorsum and the other in the posterior part of the opisthosoma. It can be distinguished from *P. fibra* by having the palptarsus (1.5 times longer) than the moveable chelae rather than the palptarsus and moveable chelae subequal in *P. fibra*, and by having the terminal eupathidium on palptarsus rounded distally as opposed to bidentate in *P. fibra*. It can be separated also by the form of the dorsal ornamentation of the posterior part of the idiosoma, elongate rather than short reticulated areas in *P. fibra* and the trichobothrium 2 times longer than that in *P. fibra*. The new species differs from *T. parafibra* in having sparsely serrate rather than smooth dorsal body setae and having the terminal eupathidium on palptarsus (T) shape and seta d divided. It can be also distinguish by having well developed empodium claw rather than hairy empodium without claw in *T. parafibra*.

Using KAZMIERSKI's (1998) key, the new species was keyed out to *Lorryia alkaenae* Panou and Emmanuel 1996 (couplet 70) and not to *L. fibra* (couplet 91). The divergence occurred at couplet 60 (shape of tarsal eupathidium). *Lorryia alkaenae* exhibits also two large reticulated areas but it differs from the new species by several minute reticulate areas scattered over the opisthosoma, having dorsal setae strongly serrate and striation pattern between setae 3a and 4a almost transverse.

REFERENCES

- ANDRÉ H. M., 1980. — A generic revision of the family Tydeidae (Acari : Actinedida). IV. Generic description, key and conclusion. — Bull. Ann. Soc. R. Belge Entomol., 116: 103-168.
- ANDRÉ H. M., 1981a. — A generic revision of the family Tydeidae (Acari : Actinedida). 11. Organotaxy of the idiosoma and gnathosoma. — Acarologia, 22 : 31-46.
- ANDRÉ H. M., 1981b. — A generic revision of the family Tydeidae (Acari : Actinedida). 111. Organotaxy of the legs. — Acarologia, 22 : 165-178.
- KAZMIERSKI A., 1989. — Revision of the genera *Tydeus* Koch sensu André with description of a new genus and four new species of Tydeinae (Acari : Actinedida : Tydeidae). — Mitt. Hamb. Zool. Mus. Inst., 86: 289-314.
- KAZMIERSKI A., 1998. — Tydeinae of the world: generic relationships, new and redescribed taxa and keys to all species. A revision of the subfamilies Prettydeinae and Tydeinae (Acari: Actinedida: Tydeidae)- part IV. — Acta Zool. Cracov. 41 (2): 283-455.
- KUZNETZOV N. N., 1975. — New genus and species of Tydeidae (Acariformes) of the Crimean fauna. — Zool. Zh., 54 : 1255-1257.
- MARSHALL V.G., 1970. — Tydeid mites (Acari : Prostigmata) from Canada. 1. New and redescribed species of *Lorryia*. Ann. Entomo. Soc. Québec, 15: 17-52.
- MOMEN F. M., 1986. — Mites associated with unsprayed orchards with particular reference to trophic relationships and feeding mechanisms. Ph. D. Thesis, University College Dublin, Ireland.
- MOMEN F. M., 1988. — New species of mites of the family Tydeidae (Acarina: Prostigmata) collected from unsprayed apple trees in Ireland. — Acarologia 29 (4): 355-360.
- MOMEN F. M., 1990. — A new tydeid mite (Acari : Tydeidae) associated with rusty grain beetle on dried wheat. — Entomol. Mitt. Zool. Mus. Hamburg, 138: 19-24.

- MOMEN F. M. & EL-BAGOURY M., 1994. — A new tydeid mite, *Tydeus katti* sp.n., from Egypt (Acari: Tydeidae). — Entomol. Mitt. Zool. Mus. Hamburg, 150 : 127-131.
- MOMEN F. M. & LUNDQVIST L., 1995. — The genus *Tydeus* (Acari :Prostigmata) in Southern Sweden, Six new species. Acarologia, 36: 41-53.
- MOMEN F. M. & SINHA R. N., 1991. — Tydeid mites associated with store grain and oilseeds in Canada, with description of a new genus and five new species (Acari: Tydeidae). Can. J. Zool., 69: 1226-1253.
- PANOU H. N. & EMMANOUEL N. G., 1996. — Two new species of *Lorryia* (Acari: Tydeidae) from Greece. — Entomol. Mitt. Zool. Mus. Hamburg, 154: 91-103.